

FRONT ELEVATION

SCALE: 1/4" = 1'-0"

BUILDER:



www.CREATIVEGAZEBOS.com

PROJECT:

16x18 Manor Pavilion

| | | |
|-------|---------|------|
| FINAL | 6/15/21 | E.S. |
| | | |
| | | |
| | | |



DRAFTING

CONCEPTS

5219 Old Strasburg Rd.

Kinzers, PA 17535

P. 717-442-5053 F. 717-370-5925

John@DraftingConceptsLLC.net

SCALE:

AS NOTED

SHEET TITLE:

Cover sheet

PROJECT NO.:

D362-21

CODE & LOADING INFORMATION

OCCUPANCY TYPE

- RESIDENTIAL STORAGE

CONSTRUCTION TYPE

- TYPE 5 B

LOADING NOTES

- 1st FLOOR ON GRADE

- GROUND SNOW = 30 PSF

- DEAD LOADS = 10 PSF

- BASIC WIND SPEED = 115 MPH

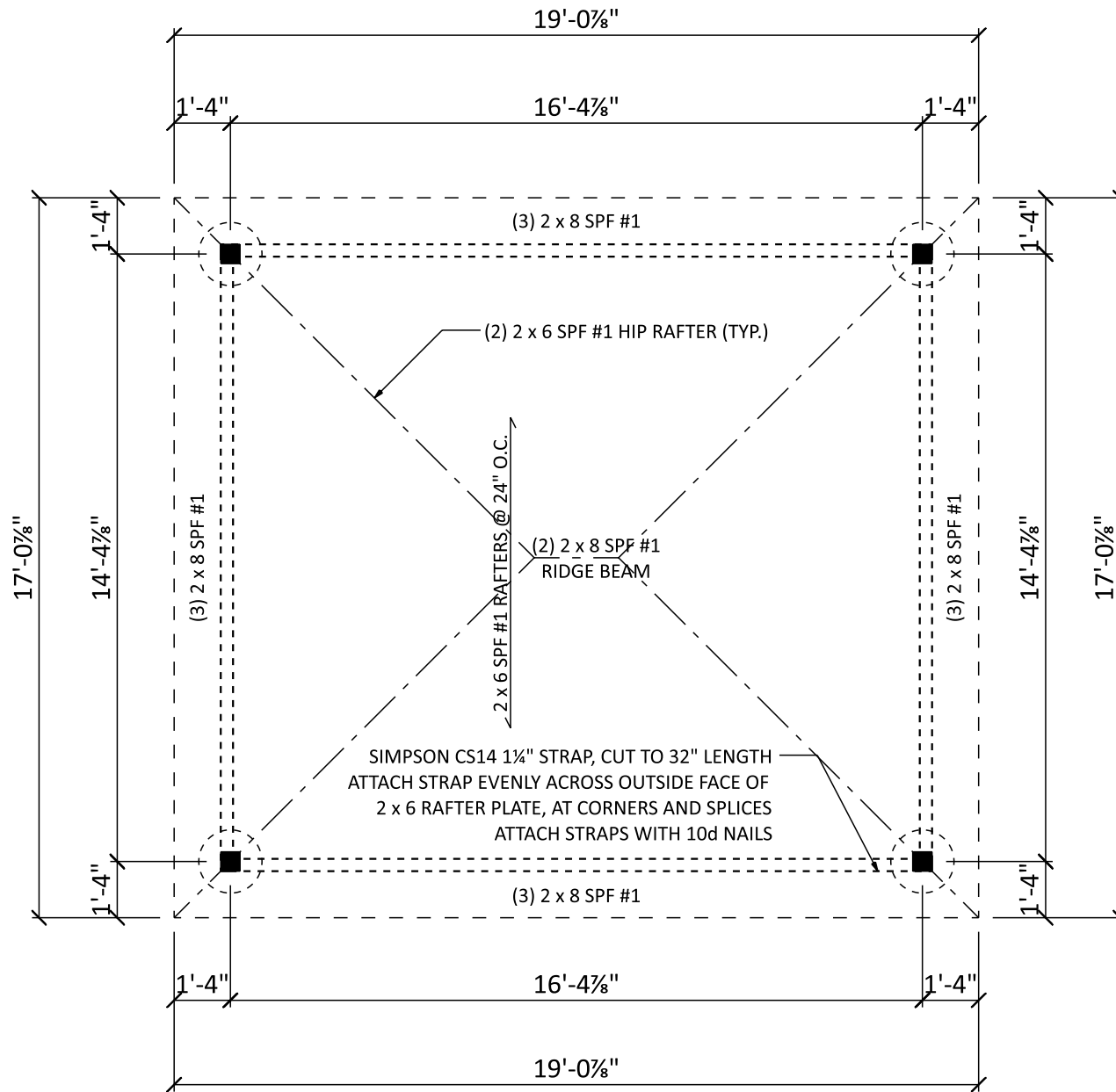
- EXPOSURE CLASS = B

- SEISMIC DESIGN CATEGORY = B

- FROST LINE DEPTH = 36"

- ASSUMED SOIL CLASS = GM, GC

- SOIL BEARING CAPACITY = 2000 PSF
IF SOIL DIFFERS FROM ASSUMED ABOVE
(REFER TO IRC CODES)



FLOOR PLAN

SCALE: 1/4" = 1'-0"

BUILDER:



www.CREATIVEGAZEBOS.com

PROJECT:

16x18 Manor Pavilion

| | | |
|-------|---------|------|
| FINAL | 6/15/21 | E.S. |
| | | |
| | | |
| | | |



DRAFTING

CONCEPTS

5219 Old Strasburg Rd.
Kinzers, PA 17535

P. 717-442-5053 F. 717-370-5925

John@DraftingConceptsLLC.net

SCALE:

AS NOTED

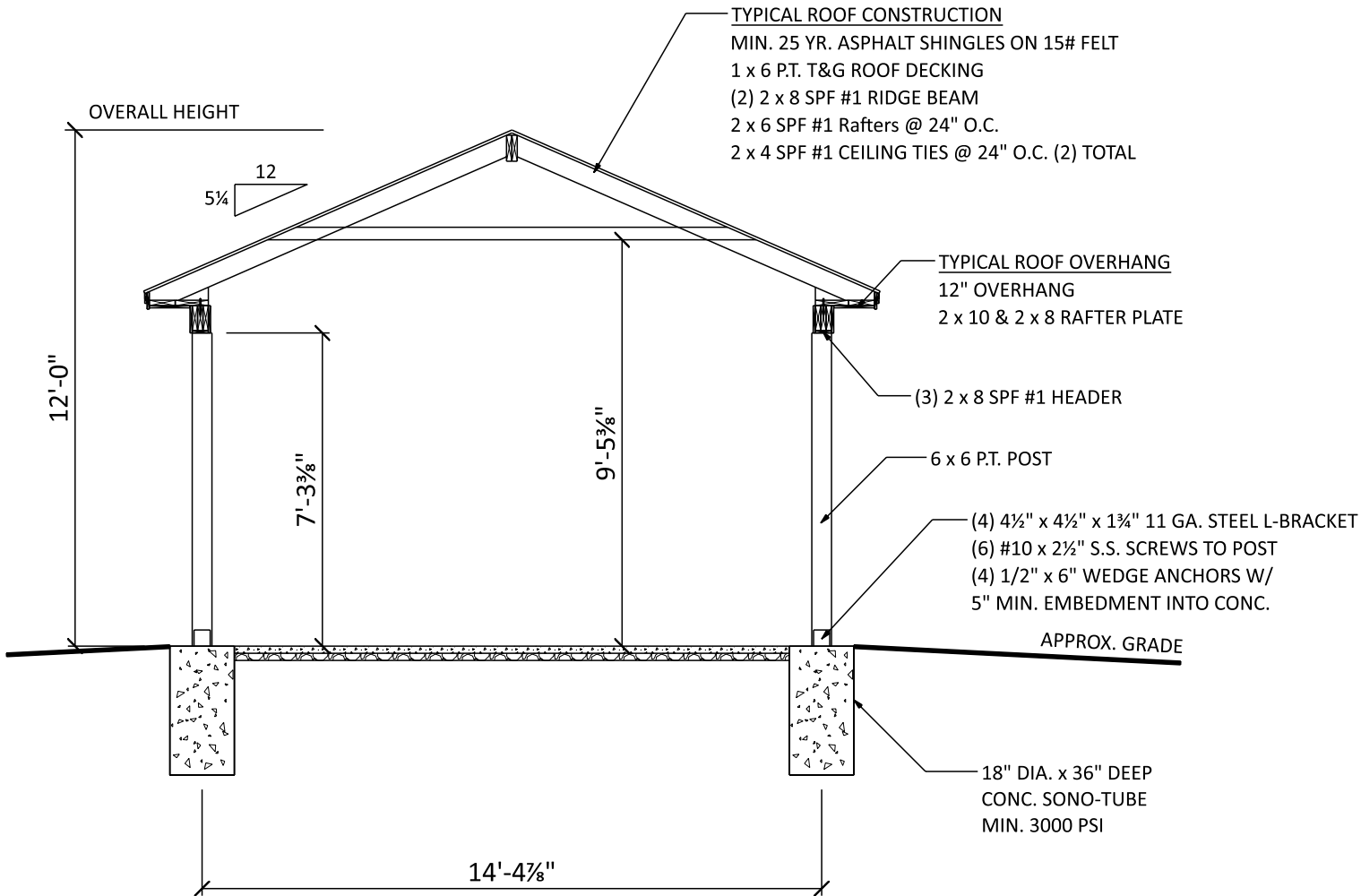
SHEET TITLE:

Floor plan

PROJECT NO.:

D362-21

2



SECTION A

SCALE: 1/4" = 1'-0"

BUILDER:



www.CREATIVEGAZEBOS.com

PROJECT:

16x18 Manor Pavilion

| FINAL | 6/15/21 | E.S. |
|-------|---------|------|
| | | |
| | | |
| | | |



DRAFTING
 CONCEPTS

5219 Old Strasburg Rd.
 Kinzers, PA 17535

P. 717-442-5053 F. 717-370-5925

John@DraftingConceptsLLC.net

SCALE:

AS NOTED

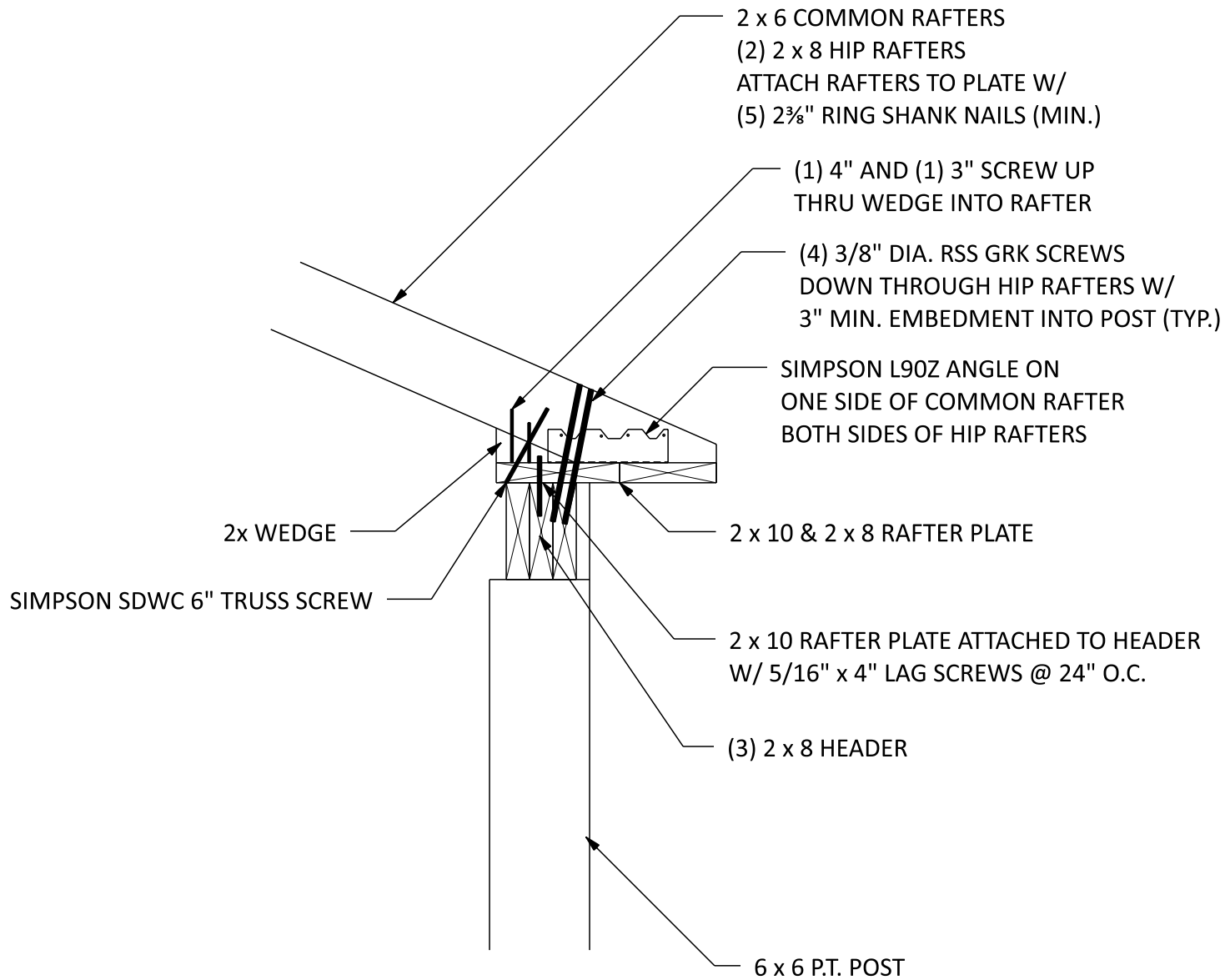
SHEET TITLE:

Section A

PROJECT NO.:

D362-21

3



CONNECTION DETAIL

SCALE: 1" = 1'-0"

BUILDER:



www.CREATIVEGAZEBOS.com

PROJECT:

16x18 Manor Pavilion

| | | |
|-------|---------|------|
| FINAL | 6/15/21 | E.S. |
| | | |
| | | |
| | | |



DRAFTING

CONCEPTS

5219 Old Strasburg Rd.
 Kinzers, PA 17535

P. 717-442-5053 F. 717-370-5925

John@DraftingConceptsLLC.net

SCALE:

AS NOTED

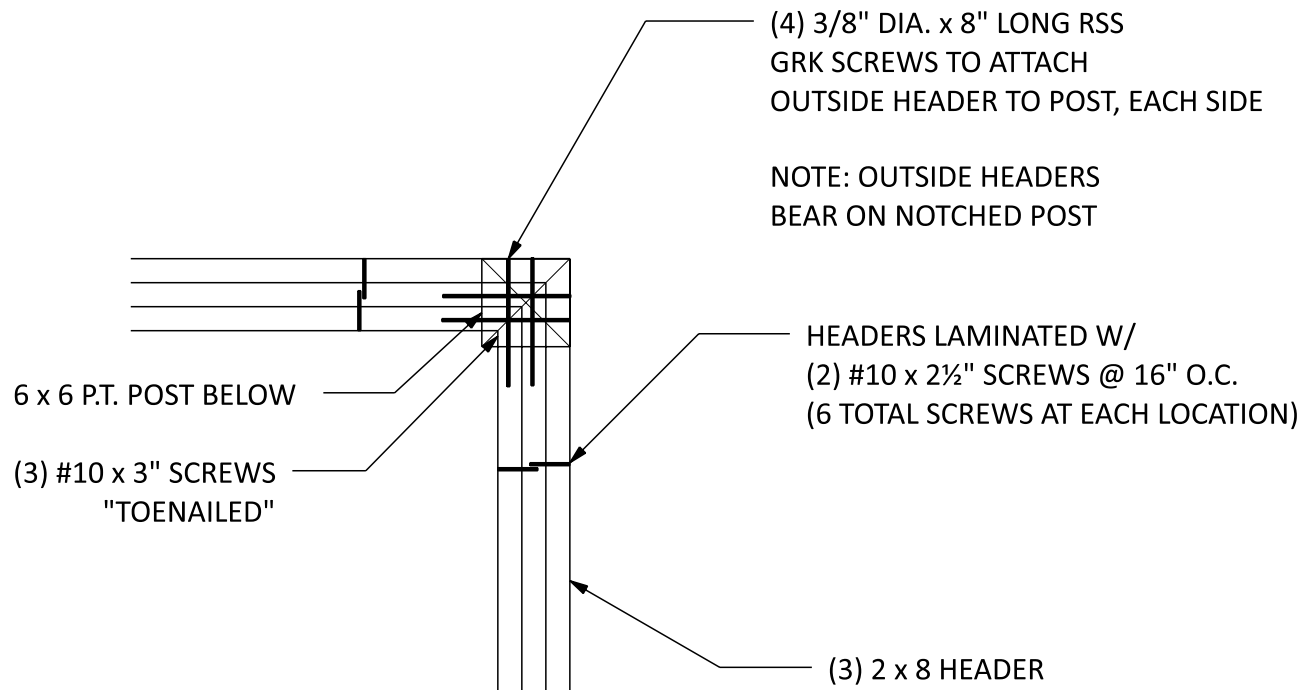
SHEET TITLE:

Connection detail

PROJECT NO.:

D362-21

4



HEADER TO POST

SCALE: 1" = 1'-0"

BUILDER:



www.CREATIVEGAZEBOS.com

PROJECT:

16x18 Manor Pavilion

| | | |
|-------|---------|------|
| FINAL | 6/15/21 | E.S. |
| | | |
| | | |
| | | |



DRAFTING

CONCEPTS

5219 Old Strasburg Rd.

Kinzers, PA 17535

P. 717-442-5053 F. 717-370-5925

John@DraftingConceptsLLC.net

SCALE:

AS NOTED

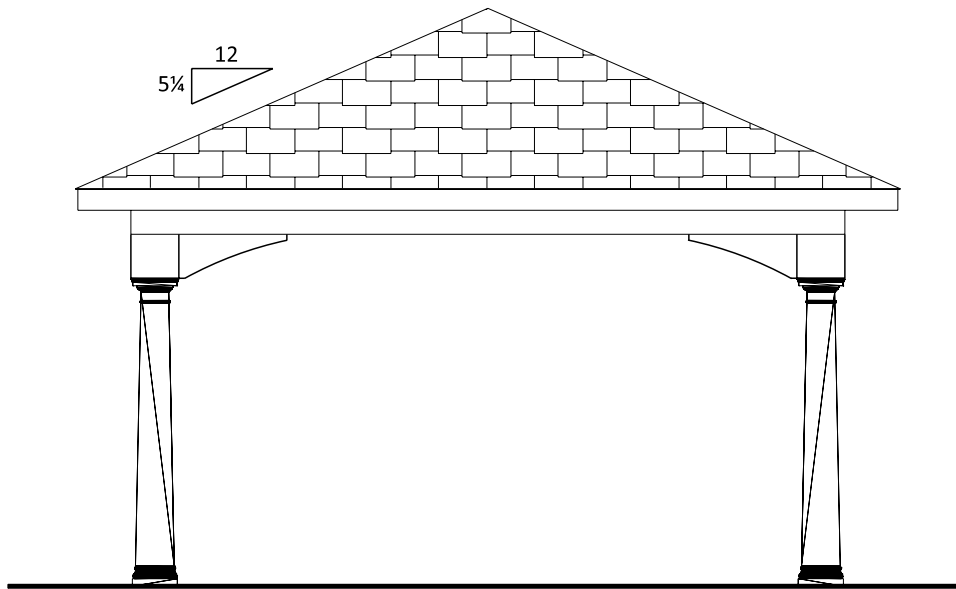
SHEET TITLE:

Post connection

PROJECT NO.:

D362-21

5



RIGHT ELEVATION

SCALE: 1/4" = 1'-0"

BUILDER:



www.CREATIVEGAZEBOS.com

PROJECT:

16x18 Manor Pavilion

| | | |
|-------|---------|------|
| FINAL | 6/15/21 | E.S. |
| | | |
| | | |
| | | |



DRAFTING
CONCEPTS

5219 Old Strasburg Rd.
Kinzers, PA 17535

P. 717-442-5053 F. 717-370-5925

John@DraftingConceptsLLC.net

SCALE:

AS NOTED

SHEET TITLE:

Right elevation

PROJECT NO.:

D362-21

6

FASTENER SCHEDULE FOR STRUCTURAL MEMBERS

| DESCRIPTION OF BUILDING ELEMENTS | NUMBER AND TYPE OF FASTENER | SPACING OF FASTENERS |
|------------------------------------------------------------------------------------------------------------------------------------------|--------------------------------------------------------------------------------------------------------------------------------|------------------------------------------------------------------|
| ROOF | | |
| CEILING JOISTS TO TOP PLATE | (3) 10d | TOE NAIL |
| CEILING JOISTS NOT ATTACHED TO PARALLEL RAFTER, LAPS OVER PARTITIONS | (4) 10d | FACE NAIL |
| COLLAR TIE TO RAFTER, FACE NAIL OR 1X" X 20 GAGE RIDGE STRAP TO RAFTER | (4) 10d | FACE NAIL EACH RAFTER |
| RAFTER OR ROOF TRUSS TO PLATE | (3) 16d | TOE NAIL |
| ROOF RAFTERS TO RIDGE, VALLEY OR HIP RAFTERS | (4) 16d | TOE NAIL |
| WALL | | |
| STUD TO STUD | 16d | 24" O.C. FACE NAIL |
| BUILT-UP HEADER, TWO PIECES | 16d | 16" O.C. EA. EDGE FACE NAIL |
| CONTINUOUS HEADER TO STUD | (4) 8d | TOE NAIL |
| DOUBLE STUDS, FACE NAIL | 10d | 24" O.C. |
| TOP PLATE TO TOP PLATE | 10d | 12" O.C. FACE NAIL |
| DOUBLE TOP PLATES, MINIMUM 48-INCH OFFSET OF END JOINTS, FACE NAIL IN LAPPED AREA | (8) 16d | ----- |
| BOTTOM PLATE TO JOIST, RIM JOIST, BAND JOIST OR BLOCKING | 16d | 12" O.C. FACE NAIL |
| BOTTOM PLATE TO JOIST, RIM JOIST, BAND JOIST OR BLOCKING (AT BRACED WALL PANEL) | (3) 16d | 16" O.C. FACE NAIL |
| TOP OR BOTTOM PLATE TO STUD | (3) 16d | END NAIL |
| TOP PLATES, LAPS AT CORNERS AND INTERSECTIONS | (3) 10d | FACE NAIL |
| JOIST TO SILL, TOP PLATE OR GIRDER | (4) 8d | TOE NAIL |
| RIM JOIST, BAND JOIST, OR BLOCKING TO SILL OR TOP PLATE (ROOF APPLICATIONS ALSO) | 10d | 6" O.C. TO NAIL |
| BUILT-UP GIRDERS AND BEAMS, 2-INCH LUMBER LAYERS | 10d | 24" O.C. FACE NAIL AT TOP AND BOTTOM STAGGERED ON OPPOSITE SIDES |
| <small>WOOD STRUCTURAL PANELS, SUBFLOOR, ROOF AND INTERIOR WALL SHEATHING TO FRAMING AND PARTICLEBOARD WALL SHEATHING TO FRAMING</small> | | |
| $\frac{5}{16}$ " - $\frac{1}{2}$ " | 6d COMMON NAIL (SUBFLOOR, WALL) 8d COMMON NAIL (ROOF) | 6 12 |
| $\frac{3}{32}$ " - 1" | 8d COMMON NAIL | 6 12 |
| $\frac{1}{2}$ " GYPSUM SHEATHING | 1 $\frac{1}{2}$ " GALVANIZED ROOFING NAIL, STAPLE GALVANIZED, 1 $\frac{1}{2}$ " LONG; 1 $\frac{1}{4}$ " SCREWS, TYPE W OR S | 7 7 |
| $\frac{5}{8}$ " GYPSUM SHEATHING | 1 $\frac{1}{2}$ " GALVANIZED ROOFING NAIL, STAPLE GALVANIZED, 1 $\frac{1}{2}$ " LONG; 1 $\frac{1}{4}$ " SCREWS, TYPE W OR S | 7 7 |

ALTERNATE ATTACHMENTS

| NOM. MATERIAL THICKNESS (INCHES) | DESCRIPTION OF FASTENER AND LENGTH (INCHES) | SPACING OF FASTENERS | |
|------------------------------------------------------------------------------------------------------------------------------------------|---------------------------------------------|----------------------|--------------------------------|
| | | EDGES (INCHES) | INTERMEDIATE SUPPORTS (INCHES) |
| <small>WOOD STRUCTURAL PANELS, SUBFLOOR, ROOF AND INTERIOR WALL SHEATHING TO FRAMING AND PARTICLEBOARD WALL SHEATHING TO FRAMING</small> | | | |
| UP TO $\frac{1}{2}$ " | STAPLES 15 GA. 1 $\frac{3}{4}$ " | 4 | 8 |
| | NAIL 2 $\frac{1}{4}$ " | 3 | 6 |
| | STAPLES 16 GA. 1 $\frac{3}{4}$ " | 3 | 6 |
| $\frac{23}{32}$ " AND $\frac{3}{4}$ " | STAPLES 14 GA. 2 | 4 | 8 |
| | STAPLES 15 GA. 1 $\frac{3}{4}$ " | 3 | 6 |
| | NAIL 2 $\frac{1}{4}$ " | 4 | 8 |

TABLE R602.3(3) REQUIREMENTS FOR WOOD STRUCTURAL PANEL WALL SHEATHING USED TO RESIST WIND PRESSURES

| SIZE | PENETRATION (INCHES) | MINIMUM WOOD STRUCTURAL PANEL SPAN RATING | MINIMUM NOMINAL PANEL THICKNESS (inches) | MAXIMUM WALL STUD SPACING (inches) | PANEL NAIL SPACING | | MAXIMUM WIND SPEED (MPH) | | |
|---------------------------|----------------------|-------------------------------------------|------------------------------------------|------------------------------------|---------------------|---------------------|--------------------------|-----|-----|
| | | | | | EDGES (INCHES O.C.) | FIELD (INCHES O.C.) | WIND EXPOSURE CATEGORY | | |
| | | | | | | | B | C | D |
| 6d COMMON (2.0" X 0.113") | 1.5 | 24/0 | 3/8 | 16 | 6 | 12 | 110 | 90 | 85 |
| 8d COMMON (2.5" X 0.131") | 1.75 | 24/16 | 7/16 | 16 | 6 | 12 | 130 | 110 | 105 |
| | | | | 24 | 6 | 12 | 110 | 90 | 85 |

GENERAL NOTES

- ALL CONSTRUCTION SHALL COMPLY WITH 2015 INTERNATIONAL RESIDENTIAL CODE
- BUILDER MUST VERIFY ALL DIMENSIONS AND ACCURACY BEFORE CONSTRUCTION.
- WRITTEN DIMENSIONS SHALL TAKE PRECEDENCE OVER SCALED MEASUREMENTS.
- WINDOW AND DOOR, SIZES AND LOCATIONS, MAY VARY.
- ALL STRUCTURAL LUMBER SHALL BE SPRUCE-PINE-FIR #2 OR BETTER, UNLESS OTHERWISE NOTED.
- ANY WOOD IN CONTACT WITH MASONRY TO BE PRESSURE-TREATED WOOD.
- GRADE MUST SLOPE AWAY FROM STRUCTURE.
- WOOD FRAMING TO BE MIN. 8" FROM GRADE LEVEL, EXCEPT AT DOORWAYS.
- WOOD TRUSSES SHALL BE DESIGNED BY A REGISTERED ENGINEER. BUILDER MUST PROVIDE CUT-SHEETS TO CODE OFFICIAL PRIOR TO INSTALLATION.
- WALL BRACING PROVIDED BY CS-WSP AND CS-G OR CS-PF METHODS AS PER IRC SECTION 602.10
- TEMPERED GLAZING REQUIREMENTS:
 - IN WINDOWS & DOORS WITHIN (18) INCHES OF WALKING SURFACE
 - IN ANY INDIVIDUAL PANEL GREATER THAN (9) SQ. FT.
 - IN WINDOWS WITHIN (24) INCHES OF ANY OPERABLE DOOR WHEN DOOR IS IN CLOSED POSITION
 - IN PANELS WITHIN STAIRWAYS, LANDING AND RAMPS, AND WITHIN (36) INCHES HORIZONTALLY OF WALKING SURFACE, UNLESS PROTECTED WITH BARS 3" O.C. CAPABLE OF WITHSTANDING 50 LB. PER LINEAR FOOT
 - IN PANELS ADJACENT TO STAIRWAY WITHIN (60) INCHES HORIZONTALLY OF THE BOTTOM TREAD OF A STAIRWAY IN ANY DIRECTION, AND WHEN THE PANEL IS WITHIN (60) INCHES OF THE TREAD NOSING. EXCEPTION: IF HANDRAIL OR GUARDRAIL IS PROVIDED, DISTANCE CAN BE REDUCED TO (18) INCHES FROM RAILING TO ADJACENT GLAZING. APPLICANT SHALL PROVIDE CODE OFFICIAL WITH CUT-SHEETS PRIOR TO CONSTRUCTION

BUILDER:



www.CREATIVEGAZEBOS.com

PROJECT:

16x18 Manor Pavilion

| | | |
|-------|---------|------|
| FINAL | 6/15/21 | E.S. |
| | | |
| | | |
| | | |



DRAFTING
CONCEPTS

5219 Old Strasburg Rd.
Kinzers, PA 17535

P. 717-442-5053 F. 717-370-5925
John@DraftingConceptsLLC.net

SCALE:

AS NOTED

SHEET TITLE:

General notes

PROJECT NO.:

D362-21

7